



SCREW & BARREL

工厂地址 : 浙江省舟山市经济开发区 B 区弘生大道 219 号 邮编 : 316000
营销中心 : 上海市嘉定区黄渡工业园春意路 111 号 (G15 高速曹安公路出口) 邮编 : 201804
Add: No.219,Hongsheng Road, B Zone, Zhoushan Economic Development Region, Zhejiang, China
电话 /Tel : 021-31275031 0580-2680338 传真 /Fax : 021-31275033 0580-2681819
Http:// www.jwell-screw.com www.jwell.cn E-mail: sales@jwell.cn



版本号/Edition: NO. 2015.05





舟山金纬螺杆制造有限公司
ZHOUZHAN JWELL SCREW & BARREL CO., LTD.

金海螺，中国螺杆第一品牌 JINHAILUO, pioneer and the best and famous brand screw in China

舟山金纬螺杆制造有限公司位于舟山经济开发区B区弘生大道219号，公司占地面积80000m²，是一家专业设计、制造螺杆、料筒的生产企业，金海螺品牌历经三十多年的实践创新和两代人的不懈努力，产品遍及世界各地，产品的质量和售后服务得到国内外使用厂家的普遍赞誉，公司以崭新的经营理念和先进的技术装备满足国内外客户的需求。



公司生产的各种螺杆料筒，严格选用优质的合金钢为原料，运用欧美最新的工艺技术和加工检测设备精心制作，确保产品的精度和质量，并具有较长的使用寿命和良好的耐磨耐蚀性能。公司承接测绘设计改造修复及批量加工业务，充分运用先进的螺杆设计技术及工艺，让客户得到物超所值的产品。

多年来，我公司本着客户至上的服务态度，不断追求产品的完美如一，不断创新，逐步降低管理成本，走专业化，服务型的企业之路，以  和  标志，创中国最好的品牌。

董事长：何海潮

Zhoushan Jwell Screw&barrel Co.,Ltd locates in NO.219 hongsheng avenue, that is in B zone of zhoushan economic development region. It covers 80,000m².Our company is professional in designing and making screw and barrel. With two generations' hard working,the brand of jinhailuo have win high appreciation because of its high quality and good service.Our company meet the need of customers in home and abroad with new idea and advanced technique.

The screws and barrels made by our company are highly precise because we use good alloy material, and it processed by the latest technology and inspection equipment of European and US.So our production is endurable and wearable. Our company could design remend and mass product, we try our best to satisfy our customers.

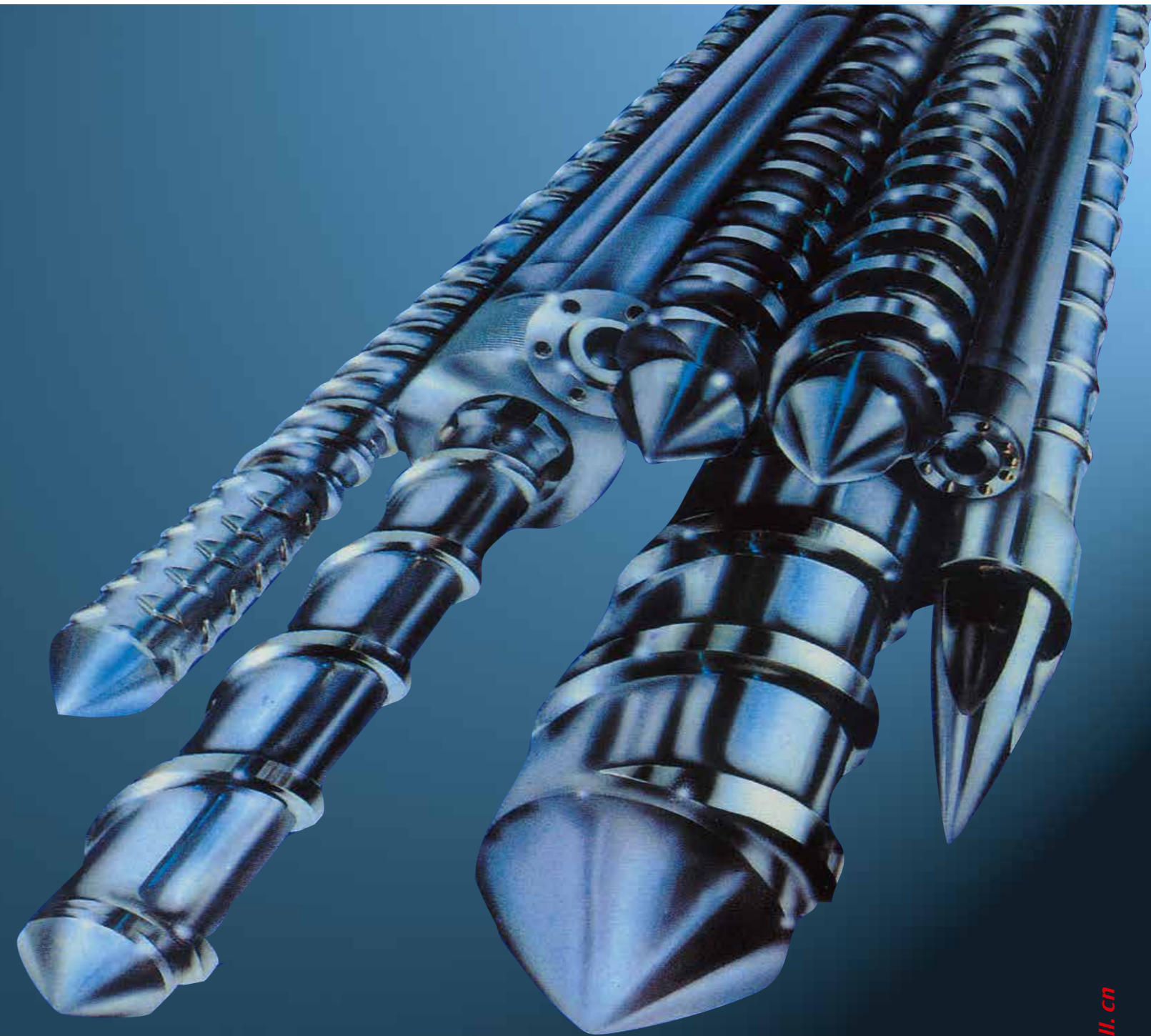
For many years,we put our customers first,making our product perfect with innovation as well as advanced management system,our goal is to make  and  as the best screw brand in China.

President: Haichao He

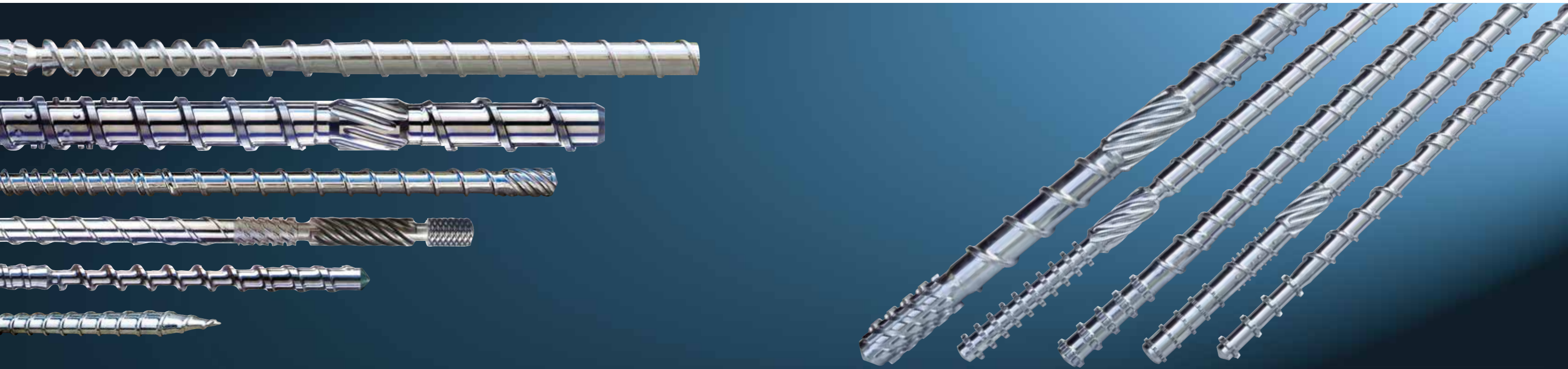


位于舟山开发区B区的大型生产基地

品质卓越，完美如一，用心持久，拼搏创新 High quality, perfection, improvement, innovation



挤出机螺杆与机筒 Screw and barrel for extruder



材料

- 优质合金钢
 1) 38CrMoAlA(JIS SACM645)
 2) 42CrMo(JIS SCM440)
 3) 9 Cr18MoV
 4) SKD11
 5) 哈氏合金 C276
 6) 锌 3# 钢

热处理

- 渗氮处理
 电镀硬铬层
 中高频淬火
 喷涂耐腐蚀耐磨双金属层
 真空淬火

应用

- 1) 用于塑料制品挤出: 吹膜淋膜、片材、板材、管材挤出
- 2) 用于化纤挤出: PET、PA6、薄膜、无纺布、绳索纤维
- 3) 用于塑料回收造粒
- 4) 用于电缆挤出: 适合 PVC, PE, PBT, 和塑胶氟化物

Material

- High quality alloy-steel
 1) 38CrMoAlA(JIS SACM645)
 2) 42CrMo(JIS SCM440)
 3) 9 Cr18MoV
 4) SKD11
 5) C276
 6) GH113

Heat-treatment

- Nitriding treatment
 Electroplated hard-chrome finish
 Medium-high frequency quenching
 Spray bimetallic coating
 Vacuum quenching

Applications

- 1) For plastic product extrusion: Blow film, sheet, plate, pipe extrusion
- 2) For chemical fiber extrusion: PET, PA6, film, non-woven fabric, rope fiber
- 3) For plastic recycling and pelletizing
- 4) For cable extrusion: PVC, PE, PBT and rubber fluoride



高效挤出机螺杆与机筒 Screw and barrel for extruder



性能和优点：

金纬公司设计的高效单螺杆、机筒采用优化的分离式螺杆设计，能快速将物料进行固液分离，增加了熔体温度均匀性、降低了原料热内应力、实现了低转速高产量。

Advantages :

The high-efficiency screw and barrel designed by JWELL company adopts optimized screw structure it can separate the material into solid and liquid part quickly, and increase the temperature uniformity of melted material, reduce the internal stress of raw material, achieve high capacity with low speed.



注塑机螺杆与机筒 Screw and barrel for injection molding machine

注塑机附件 Accessories of screw and barrel for injection molding



材料

优质合金钢
1) 38CrMoAlA(JIS SACM645)
2) 42CrMo(JIS SCM440)
3) 9 Cr18MoV
4) SKD11
5) 哈氏合金 C276

Material

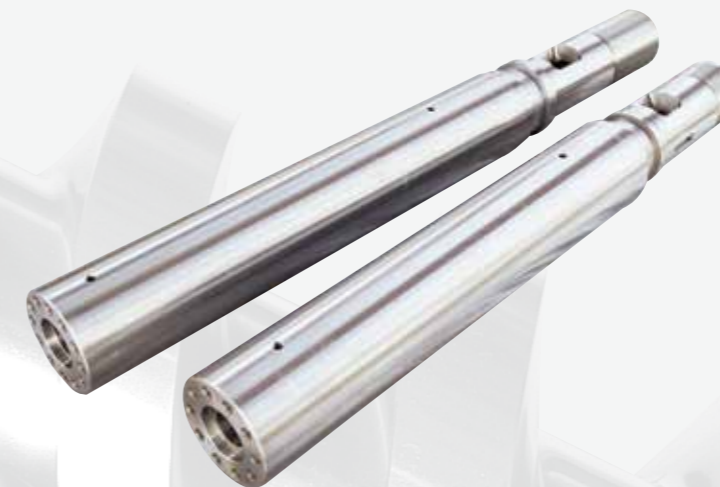
High quality alloy-steel
1) 38CrMoAlA(JIS SACM645)
2) 42CrMo(JIS SCM440)
3) 9 Cr18MoV
4) SKD11
5) C276

热处理

渗氮处理
电镀硬铬层
中高频淬火
喷涂耐腐蚀耐磨双金属层
真空淬火

Heat-treatment

Nitriding treatment
Electroplated hard-chrome finish
Medium-high frequency quenching
Spray bimetallic coating
Vacuum quenching



用途区分：注塑成型机械用 / 挤出机械用
加工范围：内径 12~300mm
有效长度：12000
氮化深度：0.5~0.8mm
氮化硬度：HV900 以上
直线度：0.015mm/m
镀铬厚度：0.02~0.085mm
适用塑胶范围：普通塑料，PP，PE，ABS，AS，PS 等
材质成分：SACM645,SCM440,38CrMoAlA

Application: for injection molding and extruder
Range of product : inner diameter 12~300mm
Effective length: 12000mm
Thickness of nitrided layer: 0.05~0.08mm
Hardness of nitrided layer: more than 900hv
Linearity: 0.015mm/m
Chrome coated layer: 0.02~0.085mm
Application range of plastic material:
PP,PE,ABS,AS,PS and other common plastics
Material: SACM645,SCM440,38CrMoAlA

锥形双螺杆与双孔料筒 Conical twin screw and barrel



材料

优质合金钢
1)38CrMoAlA(JIS SACM645)

热处理

渗氮处理
喷涂耐腐蚀耐磨双金属层
电镀硬铬层

技术指标

氮化层深度：0.5~0.8mm
氮化硬度：900~1000Hv
氮化脆性：小于一级
表面粗糙度：Ra0.4
螺杆直线度：0.015mm
氮化后表面镀铬硬度：大于 950Hv
镀铬层厚度：0.025~0.085mm

Material

High quality alloy-steel
1) 38CrMoAlA(JIS SACM645)

Heat-treatment

Nitriding treatment
Spray bimetallic coating
Electroplating hard chrome

Quideline of technique

Depth of nitration layer: 0.05~0.08mm
Hardness of nitration: 900~1000hv
Fragility of nitration: less than grand one
Roughness of the surface: Ra0.4
Linearity of the screw: 0.015mm/m
The surface hardness of chrom plating after nitrogenation:more than 950hv
Chrome-plating layer thickness:0.025~0.085mm

锥形双螺杆与双孔料筒 Conical twin screw and barrel



适用范围：

PVC 木塑，PE 木塑，超高分子板材，免烧砖托板，1:2 以上高钙扣板，高钙管材，高钙型材，软 PVC 片材，PVC 发泡板等普通塑料、PP、PE、ABS、PVC、原料造粒、生产管材、异型材、片材等产品。

Scope of application:WPC PVC,WPC PE,Super high molecular sheet,1:2 high Calcium buckle,high Calcium pipe,high Calcium Profile,soft PVC sheet,XPS-PVC etc. PP,PE,ABS,PVC,raw material, pelletizing,pipe,profile,sheet etc.

平行（同向 异向）双螺杆与机筒 Parallel twin screw and barrel



材料

优质合金钢
1) 38CrMoAlA(JIS SACM645)

热处理

渗氮处理
电镀硬铬层
喷涂耐腐蚀耐磨双金属层

平双螺杆直径：75-160
长径比：26-36

机筒内孔可采用镶高耐磨双金属衬套特殊生产工艺制造，大大延长了机筒的使用寿命。
适用范围：生产 PVC 型材，PVC 管材，PVC 造粒和木塑（WPC）制品挤出，具有剪切速率小，压缩柔和，塑化混炼均匀，产量高等优异性能。

Barrel internal surface adopts high bimetallic liner design which increase the lifetime of it.
Application: Producing PVC profile, PVC pipe, PVC compounds, and WPC products, it has the advantage of low shearing, soft compression, even mixing, and high capacity.

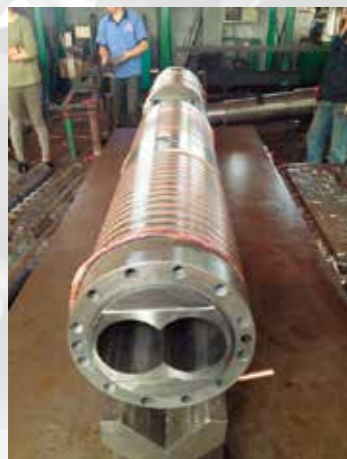
Material

High quality alloy-steel
1) 38CrMoAlA(JIS SACM645)

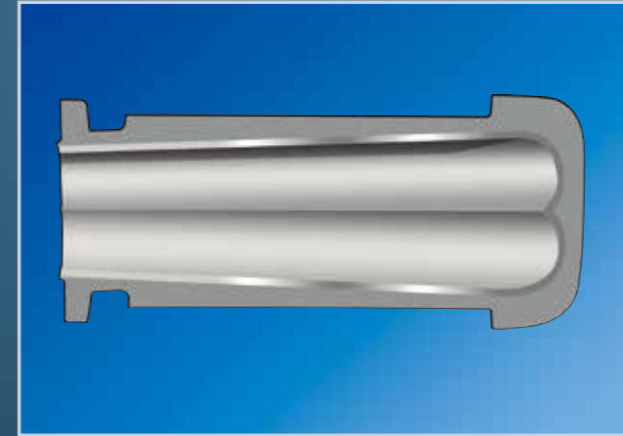
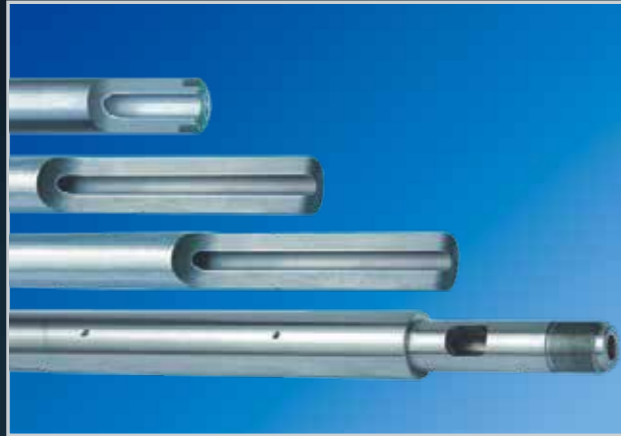
Heat-treatment

Nitriding treatment
Electroplating hard chrome
Spray bimetallic coating

parallel screw diameter(mm) : 75-160
L/D : 26-36

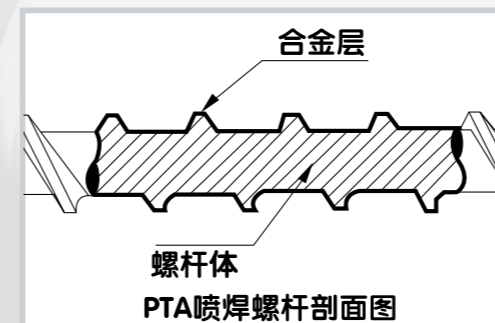


双金属螺杆 双金属料筒 Bimetallic screw and barrel



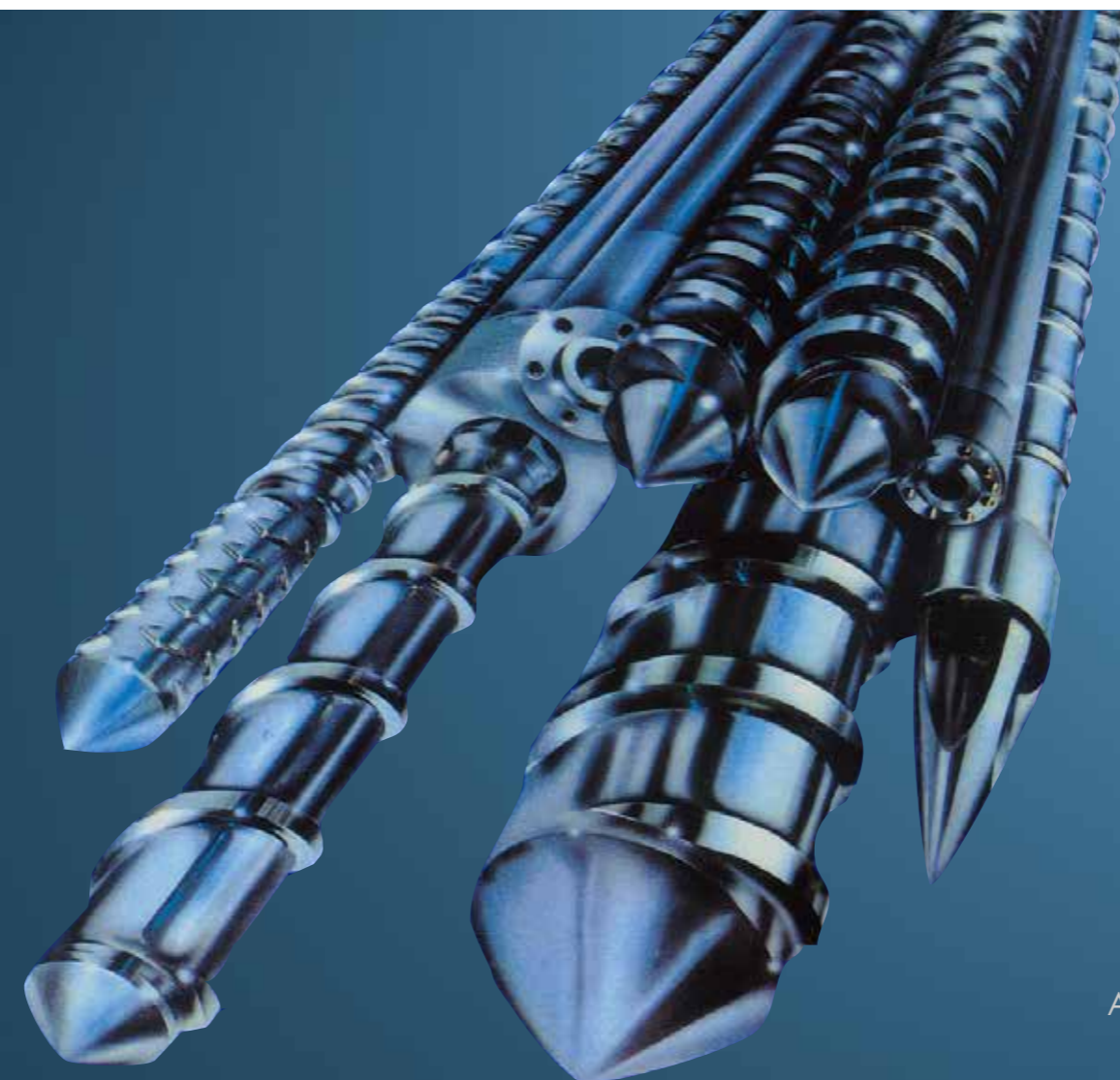
- 双金属机筒基材：45 # 40Cr
- 双金属方式：离心浇注
- 用途区分：注塑成型机械用 / 挤出机械用
- 加工范围：内径 $\phi 12 - \phi 350\text{mm}$
- 有效长度：12000mm
- 合金层深度：2mm-3mm
- 合金硬度：HRC60 以上
- 直线度：0.015mm/m
- 适用塑胶范围：普通塑料，PP、PE、ABS、AS、PS 等

- Base material of bimetallic barrel: 45# 40Cr
- Bimetallic type: centrifugal casting
- Application: for injection molding machine and extruder
- Products range: Inner diameter $\phi 12 - \phi 350\text{mm}$
- Effective length: 12000mm
- Nitrided layer thickness: 0.50-0.80mm
- Hardness: HV960
- Straightness: 0.015mm/m
- Suitable plastic material: PP, PE, ABS, AS, PS etc.



相关产品产品链接 Linkage of Relating Auxiliary Equipment

www.extrusion.com.cn



单螺杆双螺杆专用齿轮箱
Special gearboxes for extruder



加热圈、风机
Heating coil, fan



各类挤出机
All kinds of extruder



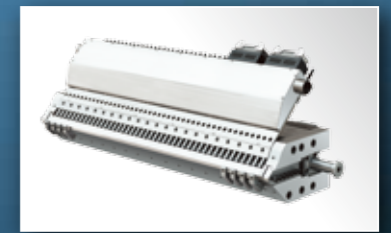
静音破碎机
Crusher



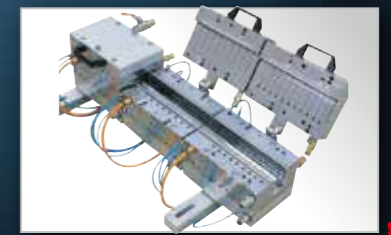
各类镜面辊筒
All kinds of mirror rollers



自动上料机及电气控制
Loader & Electrical control



各类片板模具
All kinds of plate & sheet die



各类型材模具
All kinds of profile tooling

我们的生产基地和遍布全球的销售服务网络 Our workshops and sales network all over the world




24 小时服务


交钥匙工程


培 训

 0580 2680688
客户服务热线